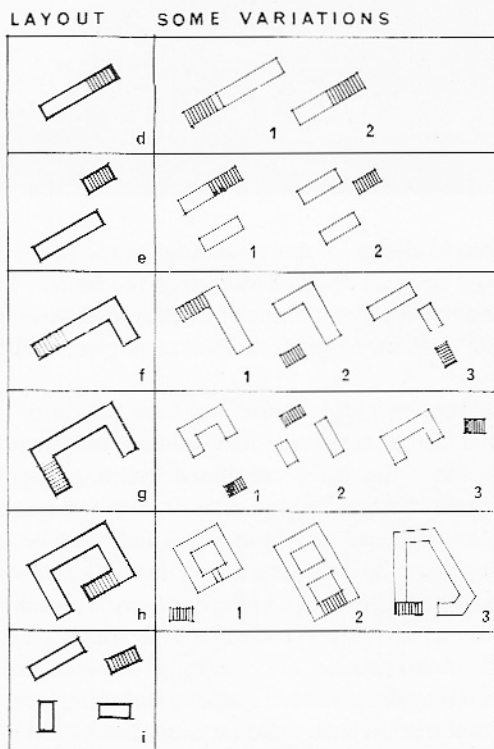


Some farmstead locations: *a.* nucleated village, surviving farmsteads numbered; *b.* hamlet in fields of ancient enclosure, three farmsteads indicated; *c.* isolated farmstead in fields of recent enclosure.

Some farmstead layouts (the hatched portion represents the farm-house).



*d.* Elongated – variation (1) indicates a 'longhouse' house and cow-house interconnected, (2) indicates a laithe house of one build but not interconnected.

*e.* Parallel – variation (1) has a connected and (2) a separated farm-house.

*f.* L-shaped – the three variations differ mainly in the position of the farm-house.

*g.* U-shaped – among variations (1) shows a separate farmhouse axially related to the farm buildings, (2) a farm-house quite detached and distinct.

*h.* Courtyard – (1) has a detached farm-house, (2) a farm-house incorporated in one

of the yards, (3) an irregular courtyard resulting from amalgamation of buildings. *i.* Scattered – especially in mountain farmsteads, different periods of build as well as difficult sites lead to disorderly development.